



# VISION 9

## Load Port Modules

*Ultra-clean functionality and superior load port-to-FOUP interoperability for today's advanced semiconductor manufacturers*



## *Why the Local LCD Interface?*

Vision™ features Brooks Automation's unique Local LCD Interface, a color touch-screen that supports fab-specific configuration with the touch of a button. The Local LCD Interface provides:

### **Software-configurable fab indicators and buttons**

- *Accelerate configuration time from hours to seconds*
- *Shorten lead times for fast tool delivery*

### **On-board service GUIs**

- *Maintain mini-environment integrity*
- *Improve MTTR via shorter tool re-qualification time*

### **On-board configuration GUI**

- *Simplify tool-specific customizations*
- *Configure capabilities to reflect different host-controlled access privileges*

The innovative Local LCD Interface dramatically speeds and simplifies configuration and customization, enabling users to leverage a single Vision LPM for all their tools—without the worry of long lead times or requalifications.

*Vision™ is a flexible, reliable load port module that supports rapid set-up, reduced lead times, and ultra-clean performance.*

## VISION 9 BROOKS AUTOMATION

Vision™, the latest generation of load port modules (LPM) from Brooks Automation, provides the ultra-clean functionality and superior load port-to-FOUP interoperability that today's advanced semiconductor manufacturers demand. An intelligent and flexible factory interface module for tool automation, Vision delivers flexible configuration, superior reliability, and unparalleled performance.

The world's largest semiconductor automation supplier and the inventor of LPM technology, Brooks has shipped load port modules across the globe to every semiconductor fab. Vision expands upon the technological innovation and domain expertise built into the company's widely installed FIXLOAD™ product line to deliver the ultimate in manufacturability and reliability.

Unlike LPMs that require substantial lead time for set-up and integration, Vision is designed for maximum interoperability, seamless interchangeability, and ease of configuration. Vision is compatible with all SEMI-compliant Front Opening Unified Pods (FOUP) and automated Front Opening Shipping Boxes (FOSB) delivered manually or via AMHS vehicles. Because it is BOLTS and FIXLOAD™ compatible, Vision integrates seamlessly into semiconductor manufacturing environments to support fast, easy set-up.

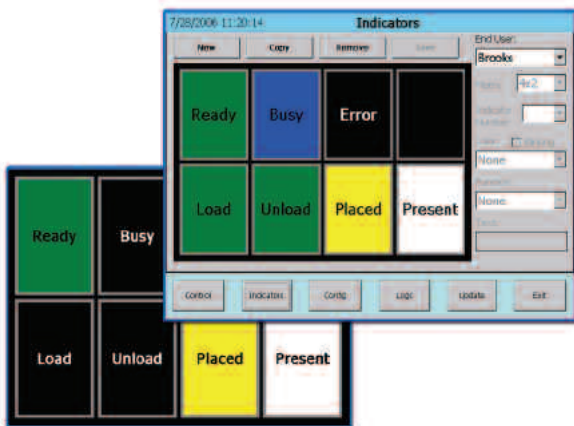
Vision's innovative Local LCD Interface enables simplified fab-specific configuration with the touch of a button, while end-of-line configurable options, including carrier ID, mapping, and E84, significantly reduce lead times for rapid tool delivery. An advanced kinematic mounting system with one-time height and level adjustment enables users to replace a taught Vision LPM without having to manually re-teach the system. Use of servo motors reduces the need for clean, dry air and reduces facilities requirements for higher reliability.

For a flexible, reliable load port module that supports rapid set-up, reduced lead times, and ultra-clean performance, set your sights on Vision.

## The Vision™ Solution

Vision load port modules meet the stringent automation requirements of today's advanced semiconductor manufacturers with features such as:

- *FIXLOAD™ 6M compatibility*
- *Kinematic mounting system*
- *Servo motion control*
- *End-of-line configurable options*
- *Fab-specific configurations*
- *MCBF of greater than 500,000 cycles*



Vision Indicators



Vision LPM with FOUF

## Flexible Configurability

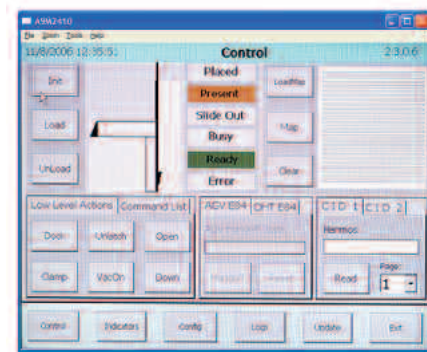
Vision™ is designed with a high level of configurability built into the base model, eliminating the need to order custom LPMs for each tool application or fab-specific environment. Thanks to end-of-line configurable options, including carrier ID, mapping, and E84, the standard Vision LPM can be quickly and configured in the field for faster tool delivery, enabling single part number ordering. Vision's unique Local LCD Interface with color touch-screen LCD features software-configurable status indicators and operator buttons that dramatically reduce configuration and lead times.

## Seamless Interoperability

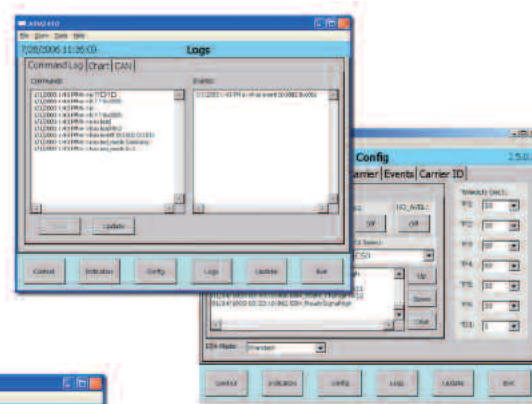
Brooks' Vision LPM is compatible with SEMI-compliant FOUPs and FOSBs delivered manually or via AMHS. It is tested under the most rigorous fab-like conditions, using both overhead and ground-based FOUP delivery systems, to ensure the highest levels of interoperability within any semiconductor manufacturing environment. Vision's closed-loop servo control system eliminates countless mechanical adjustment points within the LPM to enable more tightly controlled motion for opening and closing FOUPs—regardless of tolerance level or delivery method.

## Simplified Interchangeability

Because the patented Vision LPM product line is fully SEMI compliant, CE certified, and meets all SEMATECH I300I load port guidelines, it's easy to switch out an existing LPM for Vision without facing complex, time-consuming tool integration issues. Furthermore, BOLTS and FIXLOAD™ 6M compatibility ensures seamless interchangeability with previous generations of Brooks LPMs.

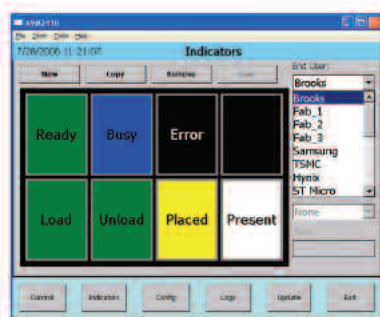


Vision on-board Service GUI

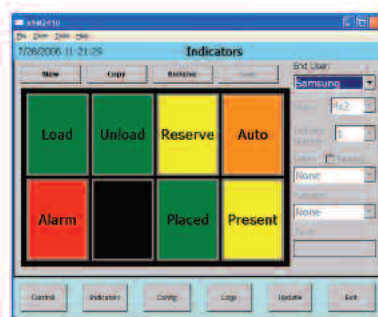


Configuration, data logging, and more!

Select your fab!



Fab 1



Fab 2

POWERED BY

**Fusion™**

# Brooks Automation: *Creating Manufacturing Efficiency. Accelerating Your Profit.*<sup>™</sup>

As semiconductor manufacturers and OEM tool suppliers work to manage rapid change and growing complexity, they rely on Brooks Automation for innovative products and world-class services to help them realize maximum return on their automation investment. Since our inception, Brooks has made quality and innovation top priorities. We leverage the latest enabling technology—from web-based spare-parts management and e-diagnostics to online knowledge management systems—to keep our solutions operating at peak performance. Brooks is ISO 9001 certified to ensure the highest levels of product quality and value.

Leveraging our global service network, Brooks is ready and able to respond to customer needs, ensuring maximum tool uptime. We offer hardware installation and implementation services—from stand-alone equipment installation and qualification to implementation of complex automated systems containing multiple Brooks products—as well as comprehensive technical support, field service, and systems integration. Brooks' GUTS<sup>®</sup> (Guaranteed Up-Time Support) rapid response program is broadly recognized for delivering unsurpassed responsiveness to customer problems whenever and wherever they may occur. Every call to our GUTS line is answered by a capable, empowered Brooks Service professional trained to diagnose and coordinate a response from first call to action plan within 59 minutes or less—guaranteed.

To anticipate customer needs, Brooks is actively involved in the definition and ongoing development of industry standards through its work on SEMI, SEMATECH, and 300mm standards committees. At the same time, we continue to build new levels of innovation and reliability into our products and invest in our global service infrastructure to make sure that we consistently exceed customer expectations for excellence and value.



Brooks Automation, Inc.  
15 Elizabeth Drive  
Chelmsford, Massachusetts 01824 U.S.A.

Telephone: (978) 262-2400 Fax: (978) 262-2500  
email: [salesupport@brooks.com](mailto:salesupport@brooks.com)  
Visit us online at: [www.brooks.com](http://www.brooks.com)