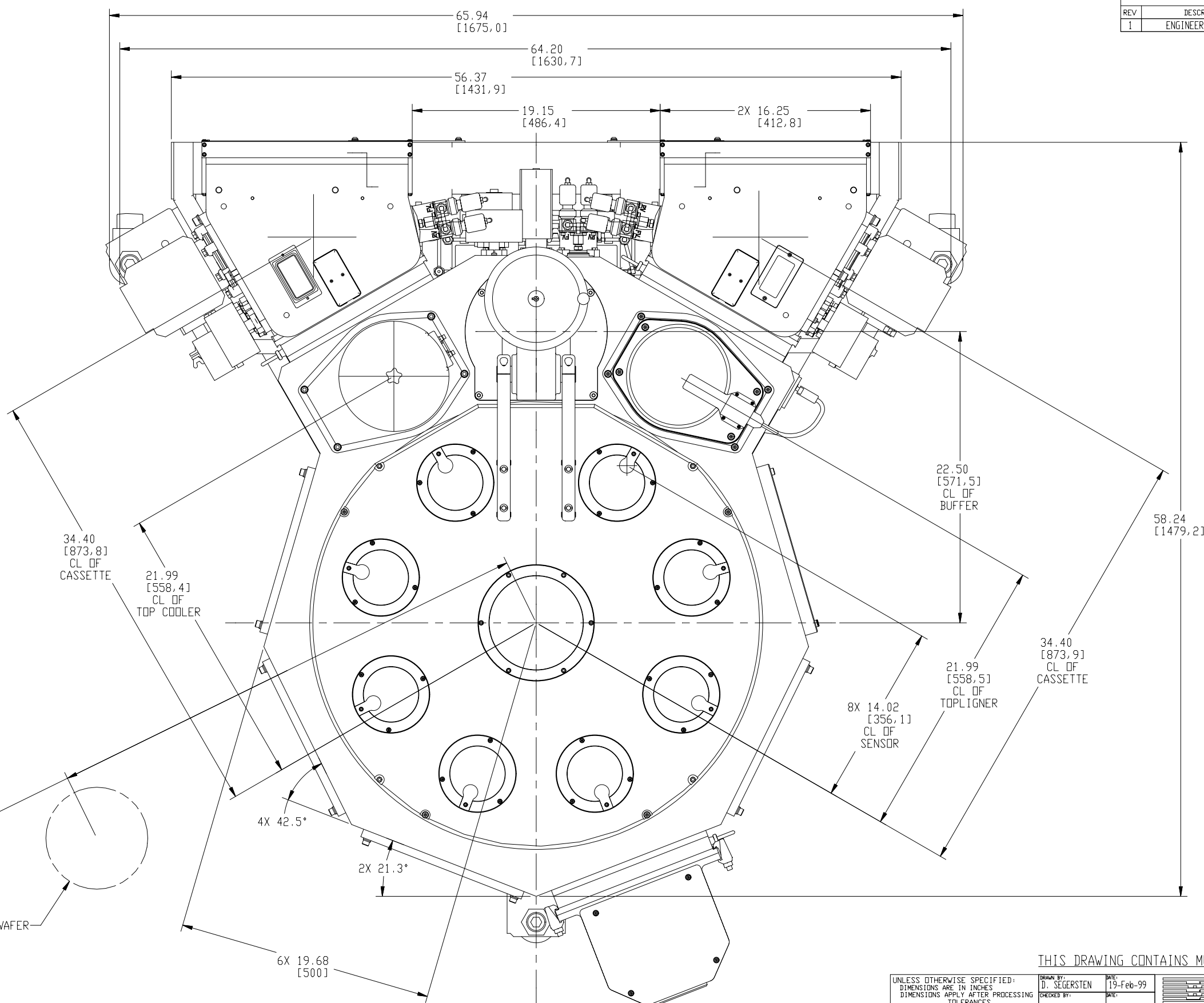


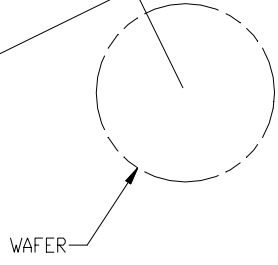
REVISIONS				
REV	DESCRIPTION	DATE	BY	APP
1	ENGINEERING RELEASE	2/23/99	RWS	PAF

NOTICE: PROPRIETARY INFORMATION
 THIS DOCUMENT AND THE INFORMATION DISCLOSED HEREIN IS CONFIDENTIAL AND PROPRIETARY TO BROOKS AUTOMATION, INC. IT MAY NOT BE REPRODUCED IN WHOLE OR IN PART, OR DISCLOSED TO ANY THIRD PARTY, OR USED WITHOUT THE PRIOR WRITTEN CONSENT OF BROOKS AUTOMATION, INC.



ARM TYPE	ARM P/N	REACH	
		END EFF OFFSET	
		6.35 IN	7.133 IN
MAG 7F	002-0011-04	945MM	965MM
MAG 7B	002-0016-33	930MM	950MM
MAG 7X	002-2035-13	900MM	N/A

NOTE: SEMI-STANDARD REACH = 855MM



MX800, HIGH VACUUM OPTION
 FOOTPRINT = 1.52m²

DESIGNED BY: D. SEGERSTEN
 TYPE: ASSEM
 PRO/ENGINEER

UNLESS OTHERWISE SPECIFIED:
 DIMENSIONS ARE IN INCHES
 DIMENSIONS APPLY AFTER PROCESSING
 TOLERANCES:
 .X = ±.1
 .XX = ±.01
 .XXX = ±.005
 X/X = ±1/64
 ANGLES = ±1/2°
 SURFACE FINISH: ✓
 INTERPRET DIM AND TOL PER ASME Y14.5M - 1994
 REMOVE ALL BURRS AND SHARP EDGES

THIS DRAWING CONTAINS MULTIPLE MODELS

DRAWN BY: D. SEGERSTEN DATE: 19-Feb-99
 CHECKED BY: DATE:
 MATERIAL:
 TREATMENT:
 THIRD ANGLE PROJECTION
 BROOKS AUTOMATION, INC.
 15 ELIZABETH DRIVE
 CHELMSFORD, MA 01824-4185
 DWG TITLE: MARATHON EXPRESS (200MM) FACILITIES INTERFACE
 SIZE: DWG NO. 090-0123-01 REV 1
 SCALE: 1/4 SHT 1 OF 13